

PROGRAM (Finalized Version)

	DAY 1 (September 24, 2016)	DAY 2 (September 25, 2016)
Registration on Day 1 8:30-16:00	9:00-11:15 Sessions A, B, C, D, E	Networking Event** Boat tour to Victoria Harbour and Sai Kung “ <i>Back garden of Hong Kong</i> ” (AM 10:00 – PM 17:00)
	11:15 – 11:30 Tea break	
	11:30 – 12:15 Opening; Keynote Speech*	
	12:15-13:25 Lunch (Harbour Restaurant, 1/F)	
	13:30-14:50 Sessions F, G, H, J, K	
	14:50-15:05 Tea break	
	15:05-16:55 Sessions L, M, N, P, Q	
	16:55-17:45 Sessions R, S, T, U	

* **Keynote Speech:** “Digital Innovation and Entrepreneurship in China” by Dr. Martin Liu, Director of Executive Education and Head of Entrepreneurship, Marketing and Management Systems Department, Nottingham University Business School, China (**venue: Function Room 1**).

** **Networking Event:** To join the tour, please visit: <http://sibresearch.org/hong-kong-boat-tour.html> for information and instructions.

Session A: MANAGEMENT & ENTREPRENEURSHIP (venue: Function Room 1)

Chair: Dmitriy Chulkov (Indiana University – Kokomo)

How Managers Use the Strategy Tools We Teach Them: Some Interesting Results and a Research Agenda (h16-070)

Speaker: Bruno Oliveira (Aston University, UK) **Best Paper Award**

Bridging The Influence of Knowledge Spillover to the Company’s Innovation Performance (h16-133)

Speakers: Horas Djulius & Juanim (Pasundan University)

Strategic of Creativity, Incremental Innovation and Business Success and Impact Against Leading Sector of Small Medium Enterprises (SMEs) in the Middle District Bangka (h16-130)

Speaker: Reniati (Bangka Belitung University-Indonesia)

Woman Entrepreneur Character as a Determinant of Business Success A Case Study in West Java, Indonesia (h16-092)

Speaker: Yuyus Suryana (Universitas Padjadjaran)

Toward Entrepreneurial University: A Literature Review Methodology (h16-173)

Speaker: Astri Ghina (Telkom University)

Entrepreneurial Competency for Small Medium Enterprises: A Literature Review Methodology (h16-172)

Speaker: Aurik Gustomo (Institut Teknologi Bandung)

Escalation of Commitment and Turnover in Top Management Teams (h16-018)

Speaker: Dmitriy Chulkov (Indiana University – Kokomo)

Session B: MARKETING, CONSUMER BEHAVIOR & PSYCHOLOGY (venue: Function Room 3)

Chair: Kyung-Nan Koh (Hankuk University of Foreign Studies)

Value Cocreation Activities by International Sport Tourists: A Service-dominant Logic Perspective (h16-107)

Speaker: Chin-Kuang Chen (Rikkyo University)

Marketing Viewpoints on Corporate Communications during Product Harm Crises (h16-119) **Best Paper Award**

Speaker: Keiko Katagata (Keio University)

Practice of High Cultural Capital Investors: A Case of Aesthetic Items (h16-121)

Speaker: Arunnee Punnaitinont (Khon Kaen University)

The Analysis of Content Marketing in Online Fashion Shops in Indonesia (h16-109)

Speaker: Arianis Chan (Universitas Padjadjaran)

What Values are Perceived by Hotel Guests? (h16-142)

Speaker: Levyda Levyda (Sahid University, Indonesia)

(Session B continued on next page ...)

Health Reformation in Indonesia Towards Sustainable Development Growth (Case Study on BPJS Kesehatan, Health Insurance in Indonesia) (h16-186)

Speaker: Widya Leksmanawati Habibie (University of Indonesia)

Semiotics of “Pink” Branding at a South Korean Cosmetics Corporation: An Ethnographic Approach (h16-169)

Speaker: Kyung-Nan Koh (Hankuk University of Foreign Studies)

Session C: BUSINESS ETHICS, CSR & SUSTAINABILITY (venue: Function Room 4)

Chair: M.Pilar Curós (University of Barcelona/ESERP Business School)

Social Responsibility Influencing Business Administration Students' Commitment to Srinakharinwirot University (h16-059)

Speaker: Nak Gulid (Srinakharinwirot University)

Environmental Regulation, Technical Progress, and Industrial Carbon Productivity (h16-067)

Speaker: Huan Zhang (Southeast University)

The Ambivalence of Marketing Condoms: The Case of DKT International (h16-117)

Speaker: Ronald Karl Gonzales (Colegio de San Lorenzo)

Beyond Means to an End (?): An Appraisal of Kentex Manufacturing Corporation's Occupational Health and Safety Standards (h16-124)

Speaker: Kimberly Del Castillo (Colegio de San Lorenzo)

The Amazing Power of Well-Constructed Rubrics in Effective Teaching (h16-052)

Speaker: Hari Singh (Humboldt State University)

The Influence of Corporate Social Responsibility towards Takaful Agency's Business Performance (h16-148)

Speaker: Muhamad Azrin Nazri (Science Islamic University of Malaysia)

Analysis of Corporate Social Responsibility. Case of Ibex -35 in Spain (h16-126)

Speaker: M.Pilar Curós (University of Barcelona/ESERP Business School)

Session D: CORPORATE GOVERNANCE (venue: Function Room 5)

Chair: Pradit Withisuphakorn (NIDA Business School)

The Impact of Board Ethnic Diversity on Firm Performance: Evidence from Public Listed Firms in Malaysia (h16-078)

Speaker: Shu Fen Chuah (Universiti Sains Malaysia) **Best Paper Award**

The Economic Freedom, Corporate Governance and Risk Taking Behavior: Evidence from the European Life Insurance Industry (h16-156)

Speaker: Hui Hsuan Liu (Ling Tung University)

The Influence of Intellectual Capital on Corporate Sustainability with Corporate Governance as an Intervening Variable (h16-134)

Speaker: Deni Darmawati (Trisakti University)

The Influence of Corporate Governance and Tax Avoidance to Earnings Management in Indonesia's Manufacturing Firms (h16-054)

Speaker: Hanung Triatmoko (Universitas Sebelas Maret)

Corporate Governance and Fraudulent Financial Statements in Indonesia's Local Government (h16-056)

Speaker: Sri Suranta (Universitas Sebelas Maret)

Corporate Governance and Earnings Management around the Implementation of Act no. 36-2008 (h16-065)

Speaker: Eko Arief Sudaryono (Universitas Sebelas Maret)

Co-opted Directors and Powerful CEOs: An Empirical Analysis (h16-012)

Speaker: Pradit Withisuphakorn (NIDA Business School)

Session E: ECONOMIC POLICY & PUBLIC ADMINISTRATION (venue: Function Room 6)

Chair: Candradewini (Universitas Padjadjaran)

Health Reform in Indonesia Based on Collaborative Governance (h16-185)

Speaker: Widya Leksmanawati Habibie (University of Indonesia)

Tax Shelter and Tax Administration (h16-113)

Speaker: Keisuke Morita (Kanagawa University)

Breaking the Backbone of the Indigents (h16-114)

Speakers: Cheddie Ching & Rebecca Eda (Colegio de San Lorenzo)

Health Care Service Quality of Public Hospitals in Bandung as Part of Public Services (h16-170)

Speaker: Marcellia Susan (Maranatha Christian University)

Process Management Capacity in Revenue Department of Cimahi City, West Java, Indonesia (h16-118)

Speaker: Candradewini (Universitas Padjadjaran)

The Organizational Capacity of Cimahi City Government on Implementation of Improving Diversification and Food Security Community Program (h16-136)

Speaker: Candradewini (Universitas Padjadjaran)

The Capacity of Program and Services Management of Revenue Department in Managing Land and Building Tax in Cimahi City (h16-171)

Speaker: Candradewini (Universitas Padjadjaran)

Session F: QUANTITATIVE FINANCE & ECONOMETRICS (venue: Function Room 1)

Chair: Ashok Patil (Kirloskar Institute of Advanced Management Studies)

Investor Sentiment, Stock Market Volatility and the IPO Pricing (h16-083)

Speaker: Wenfang Feng (Southeast University)

Paradoxical Information Contagion and “Wrong” Signs of Estimated Coefficients (h16-073)

Speaker: Tobias F. Rötheli (University of Erfurt)

Structural Modelling to Firm Value, Profitability, Capital Structure and Macroeconomics: Evidence from Indonesia (h16-140)

Speaker: Moch Bisyr Effendi (STIE Perbanas Surabaya)

Modeling Volatility Clustering of Bank Index: An Empirical Study of BankNifty (h16-175)

Speakers: Ashok Patil & Gita Madhuri (Kirloskar Institute of Advanced Management Studies)

Session G: ACCOUNTING & FINANCE (venue: Function Room 3)

Chair: Halim Dedy Perdana (Universitas Sebelas Maret)

The Effect of the Used Free Cash Flow and Structure Ownership on Company Value (h16-051)

Speaker: Christyaningsih Budiwati (Universitas Sebelas Maret)

Integrating the Audit Function as Efforts for Increasing Efficiency and Effectiveness of Government Internal Control Systems (SPIP) in Indonesia’s Local Government (h16-057)

Speaker: Bandi (Universitas Sebelas Maret)

The Effects of Tax Management and Earnings Management Incentives on Abnormal Book Tax Differences (h16-066)

Speaker: Lulus Kurniasih (Universitas Sebelas Maret)

Profitability, Market Capitalization and Firm Size in Indonesia’s Financial Entities (h16-055)

Speaker: Halim Dedy Perdana (Universitas Sebelas Maret)

Session H: ECONOMIC DEVELOPMENT & POLICIES (venue: Function Room 4)

Chair: Muhamad Rizal (Universitas Padjadjaran)

The Social Economic of Community in Radon Radiation Exposure in West Java Province (h16-050)

Speaker: Bintarsih Sekarningrum (Universitas Padjadjaran)

The Penta Helix Collaboration Model in Developing Centers of Flagship Industry in Bandung City (h16-131)

Speaker: Herwan Abdul Muhyi (Universitas Padjadjaran)

Development Jatinagor as a Model Creative Industry Zone in West Java (h16-163)

Speaker: Muhamad Rizal (Universitas Padjadjaran)

Personality Influence on the Decision to Use a Technology Study at Lecturer Profession (h16-182)

Speaker: Ignatius Hariwibowo (Atma Jaya Yogyakarta University)

Impact of Issuing Licences for Shopping and Cullinary Zone in Bandung of Increased Traffic Jams Viewed from the Legal Framework (h16-164)

Speaker: Muhamad Rizal (Universitas Padjadjaran)

Session J: MANAGERIAL CASE STUDIES (venue: Function Room 5)

Chair: Arunee Lertkornkitja (Stamford International University)

The Importance of Strategic Managerial Planning: Evidence from McDonald's Corporation (h16-084)

Speaker: Gyda Tertia Azarine Budiayati (International University Liaison Indonesia)

The Effect of Organizational Fairness in The Relationship between Budget Satisfaction and Performance in the Local Government Organizations (h16-043)

Speaker: Harryanto Bin Nyoto (Hasanuddin University)

The Effect of Entrepreneurial Orientation, Innovation Capabilities and Knowledge Creation on SMEs Business Performance (h16-154)

Speaker: Nor Asiah Omar (National University of Malaysia)

A Comparative Study of Two Thai Franchises in International Expansion (h16-122)

Speaker: Arunee Lertkornkitja (Stamford International University)

Session K: OPERATION & SUPPLY CHAIN MANAGEMENT (venue: Function Room 6)

Chair: Arianis Chan (Universitas Padjadjaran)

Sub-contractor Selection for Maintenance Service of Paper Mills in Thailand (h16-161)

Speaker: Nuttawut Rojniruttikul (King Mongkut's Institute of Technology Ladkrabang)

An Analysis on Production Cost Efficiency of Local Government-owned Drinking Water Supply Companies (PDAMs) in West Java (h16-106)

Speaker: Anang Muftiadi (Universitas Padjadjaran)

A Proposed Model of Cloud Business Intelligence Adoption in Thailand Logistics Service Providers (h16-183)

Speaker: Singha Chaveesuk (King Mongkut's Institute of Technology Ladkrabang)

Value Chain Analysis of Leather Material Dearth Impact on Leather Shoe Industry in Cibaduyut, West Java (h16-110)

Speaker: Arianis Chan (Universitas Padjadjaran)

Session L: ACCOUNTING, BANKING & FINANCE (venue: Function Room 1)

Chair: Rufo Mendoza (Asian Institute of Management)

Impact of Working Capital Management on Profitability of Listed Food and Beverage Companies in the Indonesia Stock Exchange) (h16-127)

Speaker: Nenden Kostini (Universitas Padjadjaran)

(Session L continued on next page ...)

The Impact of Reforms on Commonwealth of Independent States' (CIS) Banking Profitability (h16-079)
Speakers: Ovidiu Stoica & Bogdan Căpraru (Alexandru Ioan Cuza University of Iasi, Romania)

Optimal Strategies for Group and Individual Lending in Microfinance (h16-024)
Speaker: Amlan Mitra (Purdue University Northwest)

Capital Structure Active Adjustment of Indonesian Listed State Owned Enterprises (h16-179)
Speaker: Subiakto Soekarno (Institut Teknologi Bandung)

The Effect of Credit Risk and Capital Adequacy on the Profitability of Rural Banks in the Philippines (h16-151)
Speaker: Rufo Mendoza (Asian Institute of Management)

Relationship between Intangible Assets and Cash Flows: An Empirical Analysis of Publicly Listed Corporations in the Philippines (h16-153)
Speaker: Rufo Mendoza (Asian Institute of Management)

Session M: ORGANIZATION & HUMAN RESOURCES MANAGEMENT (venue: Function Room 3)

Chair: Sam'un Raharja (Universitas Padjadjaran)

The Operational Strategy and Policy of Water Regional Company (PDAM) in West Java, Indonesia (h16-093)
Speaker: Ria Arifianti (Universitas Padjadjaran)

The Corporate Culture Analysis of Regional Water Company in Bandung District (h16-100)
Speaker: Herwan Abdul Muhyi (Universitas Padjadjaran)

Optimization Strategy Regional Water Company in Business Communication Perspective: Study in West Java (h16-102)
Speaker: Iwan Sukoco (Universitas Padjadjaran)

Analysis of Job Satisfaction on Regional Government-owned Water Company in Sukabumi City (h16-125)
Speaker: Rivani (Universitas Padjadjaran)

External and Internal Environment Analysis (Studies at Industrial Embroidery Tasikmalaya) (h16-129)
Speaker: Pratami Wulan Tresna (Universitas Padjadjaran)

Strategic Challenge in Management of Regional Water Company Study in West Java Indonesia (h16-087)
Speaker: Sam'un Jaja Raharja (Universitas Padjadjaran)

The Factors of Local Government Business Organization Change in Indonesia: Case Study in West Java (h16-180)
Speaker: Sam'un Jaja Raharja (Universitas Padjadjaran)

Session N: ECONOMIC, SOCIAL & CULTURAL DEVELOPMENT (venue: Function Room 4)

Chair: Piyaphan Changwatchai (Kasetsart University)

Do Entrepreneurship and Economic Growth Affect Poverty, Income Inequality and Economic Development? (h16-020)
Speakers: Jeanel Dominique M. Bonito & Felbien Joenes A. Daantos (University of Santo Tomas)

The Economic Determinants of Child Mortality in the Philippines: A Panel Analysis of 16 Regions (h16-046)
Speaker: Stephanie Allen Mae dela Cruz (University of Santo Tomas)

Factors Affecting Health Expenditure in the Asian Countries (h16-104)
Speaker: Paitoon Kraipornsak (Chulalongkorn University)

Knowledge and Attitude Towards the Readiness for AEC Labour Market of Graduate Students at King Mongkut's Institute of Technology Ladkrabang (h16-157)
Speaker: Woranat Sangmanee (King Mongkut's Institute of Technology Ladkrabang)

Behavioral and Economic Determinants of Healthy Food in Bangkok (h16-178)
Speaker: Kanitta Ounarat (King Mongkut's Institute of Technology Ladkrabang)

Push Factors of Sectoral Outward FDI (h16-086)
Speaker: Piyaphan Changwatchai (Kasetsart University)

Session P: MARKETING, CONSUMER BEHAVIOR & PSYCHOLOGY (venue: Function Room 5)

Chair: Amelia Amelia (Universitas Pelita Harapan Surabaya)

Impacts of Customer Satisfaction on Customer Value Enhancement in 3-star Hotels: Moderating Role of Service Innovation (h16-058) **Best Paper Award**

Speaker: Ronald Sukwadi (Atma Jaya Catholic University of Indonesia)

Reference Group and Price as Customer Stimulus in Deciding to Purchase Low Cost Green Car in West Java, Indonesia (h16-091)

Speaker: Rita Komaladewi (Universitas Padjadjaran)

The Marketing Strategy of Utilization Leather and Kernel Gedong Gincu Mango as Food Product (h16-085)

Speaker: Badawi (Muhammadiyah University Of Cirebon)

Analysis on the Effect of Physician Information, Pharmacist Information and Experience as Moderating through Overall Risk in Enhancing Purchase Intention Generic Drugs in Indonesia (h16-149)

Speaker: Amelia Amelia (Universitas Pelita Harapan Surabaya)

Determinant of Customer-Company Identification (CCID) of Starbucks in Indonesia (h16-150)

Speaker: Amelia Amelia (Universitas Pelita Harapan Surabaya)

Can Customer Misbehavior Be Controlled? Case study on Retail Industry Consumer Behavior in Indonesia (h16-184)

Speaker: Amelia Amelia (Universitas Pelita Harapan Surabaya)

Session Q: ORGANIZATION & KNOWLEDGE MANAGEMENT (venue: Function Room 6)

Chair: Kieran O'Brien (University of Tasmania)

Value Creation, Value Delivery and Value Capture in Three Strategic Networks. Case of Indonesian Music Industry (h16-132)

Speaker: Dina Dellyana (Institut Teknologi Bandung)

Cognitive Dissonance, Status, and Business Longevity: A Case on Employers of Cigarette Company (h16-016)

Speaker: Muafi (Universitas Islam Indonesia)

Management Accounting Changes: The Indonesian Hospital Typology (h16-155)

Speaker: Yudhi Herliansyah (University of Mercubuana Jakarta)

The Moderating Effects of Innovation and Business Sophistication in the Relationship of Entrepreneurship, Ecosystem and Global Competitiveness: National Level Analysis (h16-089)

Speaker: Maria Widyarini (Parahyangan Catholic University)

Probing Actors Role in Social Interaction for Rice Price Transmission (h16-090)

Speaker: Maria Widyarini (Parahyangan Catholic University)

Incremental Innovation Strategies and Firm Performance: An Empirical Study (h16-168)

Speaker: Kieran O'Brien (University of Tasmania)

Session R: BANKING & FINANCE (venue: Function Room 1)

Chair: Sylviana Maya Damayanti (Institut Teknologi Bandung)

Credit Rating Adjustments, Stock Market Reactions, and Firms' Performance: Empirical Evidence from the Stock Exchange of Thailand (h16-145)

Speaker: Nattawoot Koowattanatianchai (Kasetsart University)

The Effect of Risk Taking Behavior of Economic Agents Towards Risk of Bankruptcy of Banks (h16-166)

Speaker: Ignatia Ryana Widyatini (Universitas Atma Jaya Yogyakarta)

Asset Allocation Strategy to Create Superior Portfolio from Equity Mutual Funds (h16-061)

Speaker: Sylviana Maya Damayanti (Institut Teknologi Bandung)

Session S: ACCOUNTING & FINANCE (venue: Function Room 3)

Chair: Tabita Indah Iswari (Universitas Atma Jaya Yogyakarta)

Analysis of Green Accounting Implementation in Indonesia's State Universities Legal Entity (PTNBH) Green Campus (h16-053)

Speaker: Amartika Istiqomah (Universitas Sebelas Maret)

Need for Cognition: Does It Influence Professional Judgment? (h16-176)

Speaker: Wimpie Yustino Setiawan (Universitas Atma Jaya Yogyakarta)

The Moderating Effect of Public Accounting Firm Size on Correlation of Organizational-Professional Conflict and Auditor Judgment (h16-174)

Speaker: Tabita Indah Iswari (Universitas Atma Jaya Yogyakarta)

Session T: QUANTITATIVE FINANCE, ECONOMETRICS & SYSTEM DYNAMICS (venue: Function Room 4)

Chair: Rohmad Fuad Armansyah (STIE Perbanas Surabaya – Indonesia)

Does Market Capitalization Matter? Tests of Random Walk Hypothesis for Thai Stock Market (h16-147)

Speaker: Ramede Sodsai (Burapha University)

An Operations View of Teamwork in the Emergency Department Using System Dynamics (h16-135)

Speaker: J. Bradley Morrison (Brandeis University)

Herd Behavior Detection in Indonesia Stock Exchange (h16-116)

Speaker: Rohmad Fuad Armansyah (STIE Perbanas Surabaya – Indonesia)

Session U: REGIONAL ECONOMIC & INDUSTRIAL DEVELOPMENT (venue: Function Room 5)

Chair: Normala Zulkifli (Sultan Idris Education University, Malaysia)

Perceived Environmental Responsibility, Experience, Trialability, and Ease of Use in the Adoption of Natural Dyes on Batik Artisans in Imogiri SMEs, Yogyakarta, Indonesia (h16-081)

Speaker: Dyah Sugandini (Universitas Pembangunan Nasional "Veteran" Yogyakarta)

International Production Networks in East Asia's Electronics Industry (h16-112)

Speaker: Shahrudin Nizam Abdul-Aziz (Sultan Idris Education University, Malaysia)

Quantile Regression Analysis of Supply-side Pay Determinants in the Malaysian Manufacturing Sector (h16-167)

Speaker: Normala Zulkifli (Sultan Idris Education University, Malaysia)

~ END ~

Guide to Presenters and Session Chairs

- Please be ready in the session five minutes before the schedule.
- The session chair will allocate the available time equally among all papers to be presented in the session (approx. 15 minutes for each paper). Each paper has to be presented within the time allotted sparing 3 minutes for discussion.
- The session chair should remind each speaker three minutes before the time he/she is expected to end the presentation. If a speaker goes beyond the time allotted, the session chair should remind him/her to end the presentation.
- SIBR assumes no responsibility if presenters are unable to finish their presentation in the assigned session for any reasons.
- Projector and computer will be provided in each conference room. Speakers are reminded to store their presentation files in their own USB storage devices. The organizer will NOT provide Internet connection.

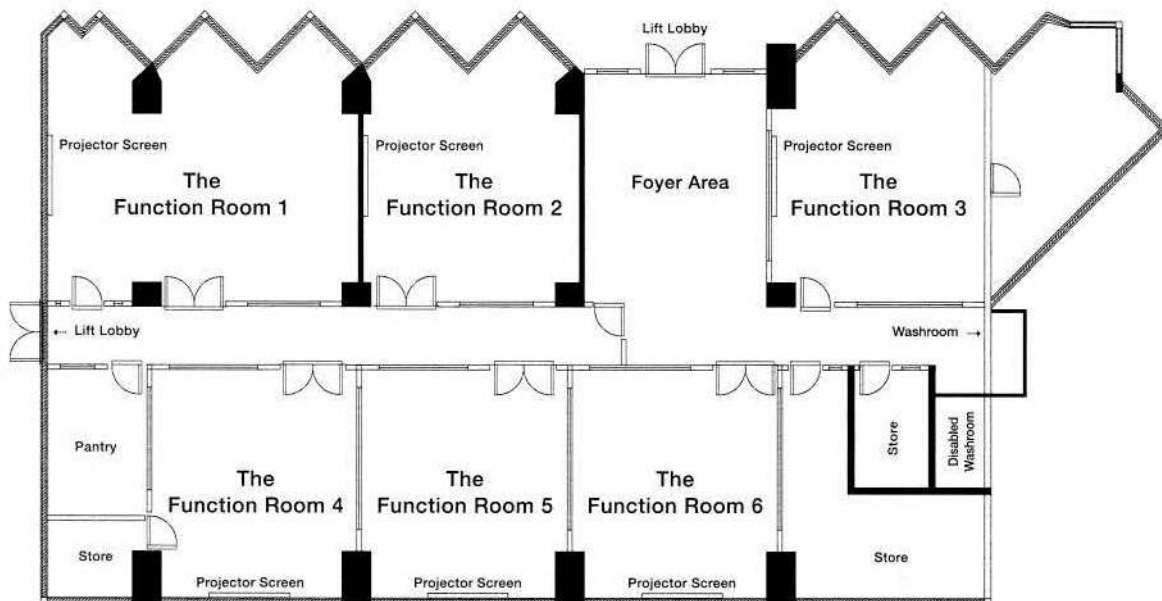
Conference Venue

Visit <http://sibresearch.org/hong-kong-venue.html> for location and maps.

Conference Registration Desk

Conference participants will collect attendance certificates, proceedings (CD) and official receipts from the registration desk. Please mention your Paper I.D. code at the desk to speed up the process. No certificates will be provided to non-registered co-authors. The conference registration desk will be open from AM08:30 to PM16:00 on September 24, 2016. Presenters assigned to morning sessions can register after they have finished their presentation.

Floor Plan of the Conference Venue (2nd Floor, Harbourview Hotel)



List of Delegates

Paper ID	Delegate	Affiliation
-	Adrian Husbands	University of Buckingham
h16-053	Amartika Istiqomah	Universitas Sebelas Maret
h16-149, h16-150, h16-184	Amelia Amelia	Universitas Pelita Harapan Surabaya
h16-024	Amlan Mitra	Purdue University Northwest
h16-106	Anang Muftiadi	Universitas Padjadjaran
h16-109, h16-110	Arianis Chan	Universitas Padjadjaran
h16-122	Arunee Lertkornkitja	Stamford International University
h16-121	Arunnee Punnanitinont	Khon Kaen University
h16-175	Ashok Patil	Kirloskar Institute of Advanced Management Studies
h16-173	Astri Ghina	Telkom University
h16-172	Aurik Gustomo	Institut Teknologi Bandung
h16-085	Badawi	Muhammadiyah University Of Cirebon
h16-057	Bandi	Universitas Sebelas Maret
h16-050	Bintarsih Sekarningrum	Universitas Padjadjaran
h16-079	Bogdan Căpraru	Alexandru Ioan Cuza University of Iasi, Romania
h16-070	Bruno Oliveira	Aston University, UK
h16-118, h16-136, h16-171	Candradewini	Universitas Padjadjaran
h16-114	Cheddie Ching	Colegio de San Lorenzo
h16-107	Chin-Kuang Chen	Rikkyo University
h16-051	Christiyaningsih Budiwati	Universitas Sebelas Maret
h16-134	Deni Darmawati	Trisakti University
h16-132	Dina Dellyana	Institut Teknologi Bandung
h16-018	Dmitriy Chulkov	Indiana University - Kokomo
h16-081	Dyah Sugandini	Universitas Pembangunan Nasional "Veteran" Yogyakarta
h16-065	Eko Arief Sudaryono	Universitas Sebelas Maret
-	Ellen S. Dizon	Colegio de San Lorenzo
h16-020	Felbien Joenes A. Daantos	University of Santo Tomas
h16-175	Gita Madhuri	Kirloskar Institute of Advanced Management Studies
h16-084	Gyda Tertia Azarine Budiwati	International University Liaison Indonesia
h16-055	Halim Dedy Perdana	Universitas Sebelas Maret
h16-054	Hanung Triatmoko	Universitas Sebelas Maret
h16-052	Hari Singh	Humboldt State University
h16-043	Harryanto Bin Nyoto	Hasanuddin University
h16-100, h16-131	Herwan Abdul Muhyi	Universitas Padjadjaran
h16-133	Horas Djulius	Pasundan University
h16-067	Huan Zhang	Southeast University
h16-156	Hui Hsuan Liu	Ling Tung University
h16-166	Ignatia Ryana Widyatini	Universitas Atma Jaya Yogyakarta
h16-182	Ignatius Hariwibowo	Atma Jaya Yogyakarta University
h16-102	Iwan Sukoco	Universitas Padjadjaran
h16-135	J. Bradley Morrison	Brandeis University
h16-020	Jeanel Dominique M. Bonito	University of Santo Tomas
h16-133	Juanim	Pasundan University
h16-178	Kanitta Ounarat	King Mongkut's Institute of Technology Ladkrabang
h16-119	Keiko Katagata	Keio University
h16-113	Keisuke Morita	Kanagawa University
h16-168	Kieran O'Brien	University of Tasmania
h16-124	Kimberly Del Castillo	Colegio de San Lorenzo

h16-169	Kyung-Nan Koh	Hankuk University of Foreign Studies
h16-142	Levyda Levyda	Sahid University, Indonesia
h16-066	Lulus Kurniasih	Universitas Sebelas Maret
-	Martin Liu	Nottingham University Business School, China
h16-126	M.Pilar Curós	University of Barcelona/ESERP Business School
h16-170	Marcellia Susan	Maranatha Christian University
h16-089, h16-090	Maria Widyarini	Parahyangan Catholic University
h16-140	Moch Bisyrri Effendi	STIE Perbanas Surabaya
-	Monvika Phadoongsitthi	Thammasat University
h16-016	Muafi	Universitas Islam Indonesia
h16-148	Muhamad Azrin Nazri	Science Islamic University of Malaysia
h16-163, h16-164	Muhamad Rizal	Universitas Padjadjaran
h16-059	Nak Gulid	Srinakharinwirot University
h16-145	Nattawoot Koowattanatianchai	Kasetsart University
h16-127	Nenden Kostini	Universitas Padjadjaran
h16-154	Nor Asiah Omar	National University of Malaysia
h16-167	Normala Zulkifli	Sultan Idris Education University, Malaysia
h16-161	Nuttawut Rojniruttikul	King Mongkut's Institute of Technology Ladkrabang
h16-079	Ovidiu Stoica	Alexandru Ioan Cuza University of Iasi, Romania
h16-104	Paitoon Kraipornsak	Chulalongkorn University
h16-086	Piyaphan Changwatchai	Kasetsart University
h16-012	Pradit Withisuphakorn	NIDA Business School
h16-129	Pratami Wulan Tresna	Universitas Padjadjaran
h16-147	Ramede Sodsai	Burapha University
h16-114	Rebecca Eda	Colegio de San Lorenzo
h16-130	Reniaty	Bangka Belitung University-Indonesia
h16-093	Ria Arifianti	Universitas Padjadjaran
h16-091	Rita Komaladewi	Universitas Padjadjaran
h16-125	Rivani	Universitas Padjadjaran
h16-116	Rohmad Fuad Armansyah	STIE Perbanas Surabaya – Indonesia
h16-117	Ronald Karl Gonzales	Colegio de San Lorenzo
h16-058	Ronald Sukwadi	Atma Jaya Catholic University of Indonesia
h16-151, h16-153	Rufo Mendoza	Asian Institute of Management
h16-087, h16-180	Sam'un Jaja Raharja	Universitas Padjadjaran
h16-112	Shahrin Nizam Abdul-Aziz	Sultan Idris Education University, Malaysia
h16-078	Shu Fen Chuah	Universiti Sains Malaysia
h16-183	Singha Chaveesuk	King Mongkut's Institute of Technology Ladkrabang
-	Somchai Supattarakul	-
h16-056	Sri Suranta	Universitas Sebelas Maret
h16-046	Stephanie Allen Mae dela Cruz	University of Santo Tomas
h16-179	Subiakto Soekarno	Institut Teknologi Bandung
h16-061	Sylviana Maya Damayanti	Institut Teknologi Bandung
h16-174	Tabita Indah Iswari	Universitas Atma Jaya Yogyakarta
h16-073	Tobias F. Rötheli	University of Erfurt
-	Wanee Taechoyotin	Thammasat University
h16-083	Wenfang Feng	Southeast University
h16-185, h16-186	Widya Leksmanawati Habibie	University of Indonesia
h16-176	Wimpie Yustino Setiawan	Universitas Atma Jaya Yogyakarta
h16-157	Worant Sangmanee	King Mongkut's Institute of Technology Ladkrabang
h16-155	Yudhi Herliansyah	University of Mercubuana Jakarta
h16-092	Yuyus Suryana	Universitas Padjadjaran